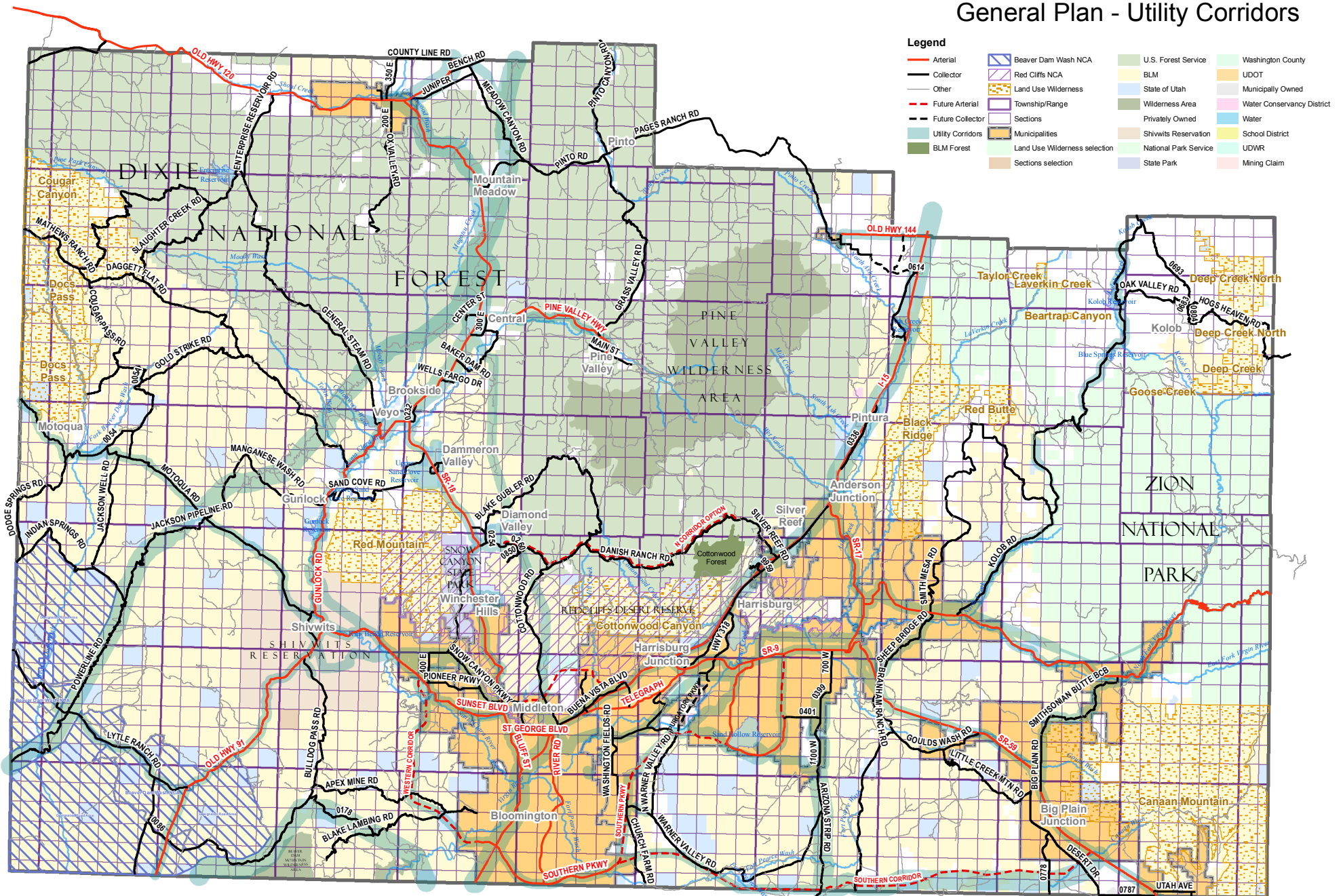


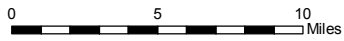
Washington County

General Plan - Utility Corridors



Legend

- Arterial
- Collector
- Other
- Future Arterial
- Future Collector
- Utility Corridors
- BLM Forest
- Beaver Dam Wash NCA
- Red Cliffs NCA
- Land Use Wilderness
- Township/Range
- Sections
- Municipalities
- Land Use Wilderness selection
- Sections selection
- U.S. Forest Service
- BLM
- State of Utah
- Wilderness Area
- Privately Owned
- Shivwits Reservation
- National Park Service
- State Park
- Washington County
- UDOT
- Municipally Owned
- Water Conservancy District
- Water
- School District
- UDWR
- Mining Claim



PRINT DATE: 8/13/2010

