

February 18th 2021



REQUEST FOR PROPOSALS

Washington County Environmental Surveys

REQUEST FOR PROPOSAL

Washington County is seeking proposals for the following environmental surveys and subsequent biological reports to be done by a qualified biologist and botanist: (1) Mojave desert tortoise, and (2) Three rare plant species (Dwarf bear poppy, Siler pincushion, and Shivwits milk vetch).

Background information:

These surveys and biological reports are necessary to meet requirements of a Section 7 consultation related to a potential land exchange between the Bureau of Land Management (BLM), the Water Conservancy District, and private landowners.

Details of land to be surveyed:

- 881 acres of BLM managed land in Warner Valley, Washington County, Utah.
Please see attached maps.

Description of surveys (click on hyperlink to open specific survey protocols):

- [Desert tortoise](#): Belt transect surveys across 881 acres by qualified biologist. Surveys must be completed between April 1–May 31 with reports due no later than one month after completion.
- [Rare plants](#): Dwarf bear poppy, Siler pincushion, Shivwits milkvetch surveys in potential habitat areas of BLM lands completed by qualified botanist. Surveys must be completed during blooming season (April 2021 or other periods as allowed by the referenced protocols). Census estimates via drone or other means may also be considered if such methods have a proven track record of providing reliable and accurate results.

PROPOSAL REQUIREMENTS

Proposal must include the following in their scope of services:

1. Names of biologists and botanists with their associated training and experience with the species being surveyed.
2. Sample reports of past survey projects and/or outline of reports that would be prepared at the completion of the project.
3. Anticipated schedule or timeline of activities.

February 18th 2021

4. Cost breakout for 1) tortoise survey & report, 2) rare plant survey and report, AND 3) a combined total cost if qualified to conduct both tortoise and plant surveys for this project.

SELECTION CRITERIA

Proposals shall be rated according to the following criteria:

1. Understanding of the project's scope of services;
2. Presentation of a reasonable time schedule;
3. Professional qualifications and experience with similar projects;
4. Charged rate/costs for services;
5. Ability to work in harmony with Washington County, its partners and the public;
6. Completeness, conciseness, and clarity of the response to this RFP.

SUBMITTAL PROCEDURE / TIMELINE

Proposals must be submitted bearing the title *Washington County Environmental Surveys* and received no later than **March 9th**, 2021. Proposals in sealed envelopes can be submitted to:

Washington County HCP
197 E. Tabernacle St.
St. George, UT 84770

Proposals may also be submitted by fax or email to:
Email: cameron.rognan@washco.utah.gov
Phone: (435) 256-6310 Fax: (435) 634-5758

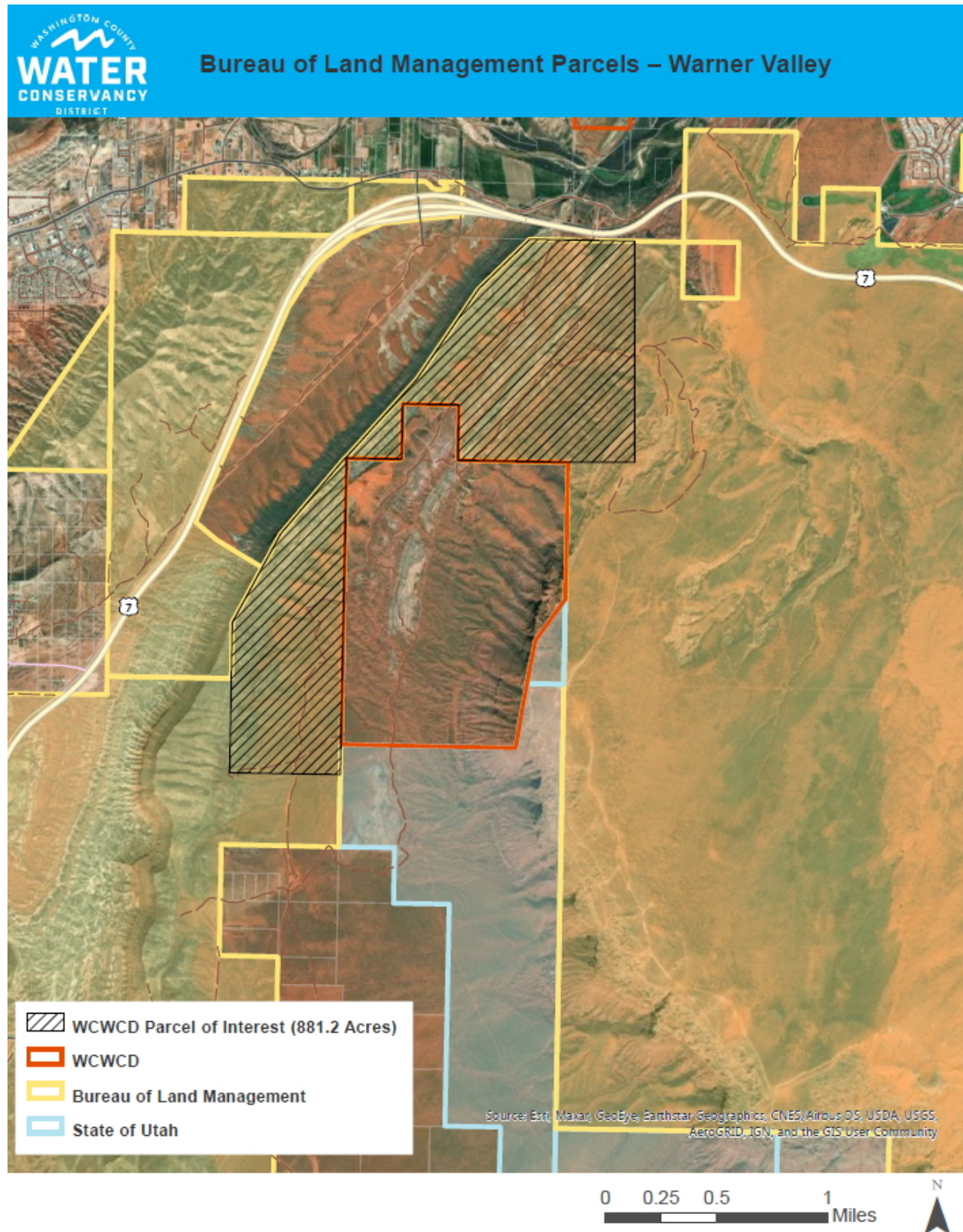
Please see attached maps showing the exact location of the lands to be surveyed.

For additional information please contact:

Cameron Rognan
HCP Administrator
Email: cameron.rognan@washco.utah.gov
Office: (435) 256-6310
Cell: (435) 705-4431
180 N 200 E #111, St. George, UT 84770

February 18th 2021

Figure 1. BLM lands requiring Mojave desert tortoise survey (881 acres).

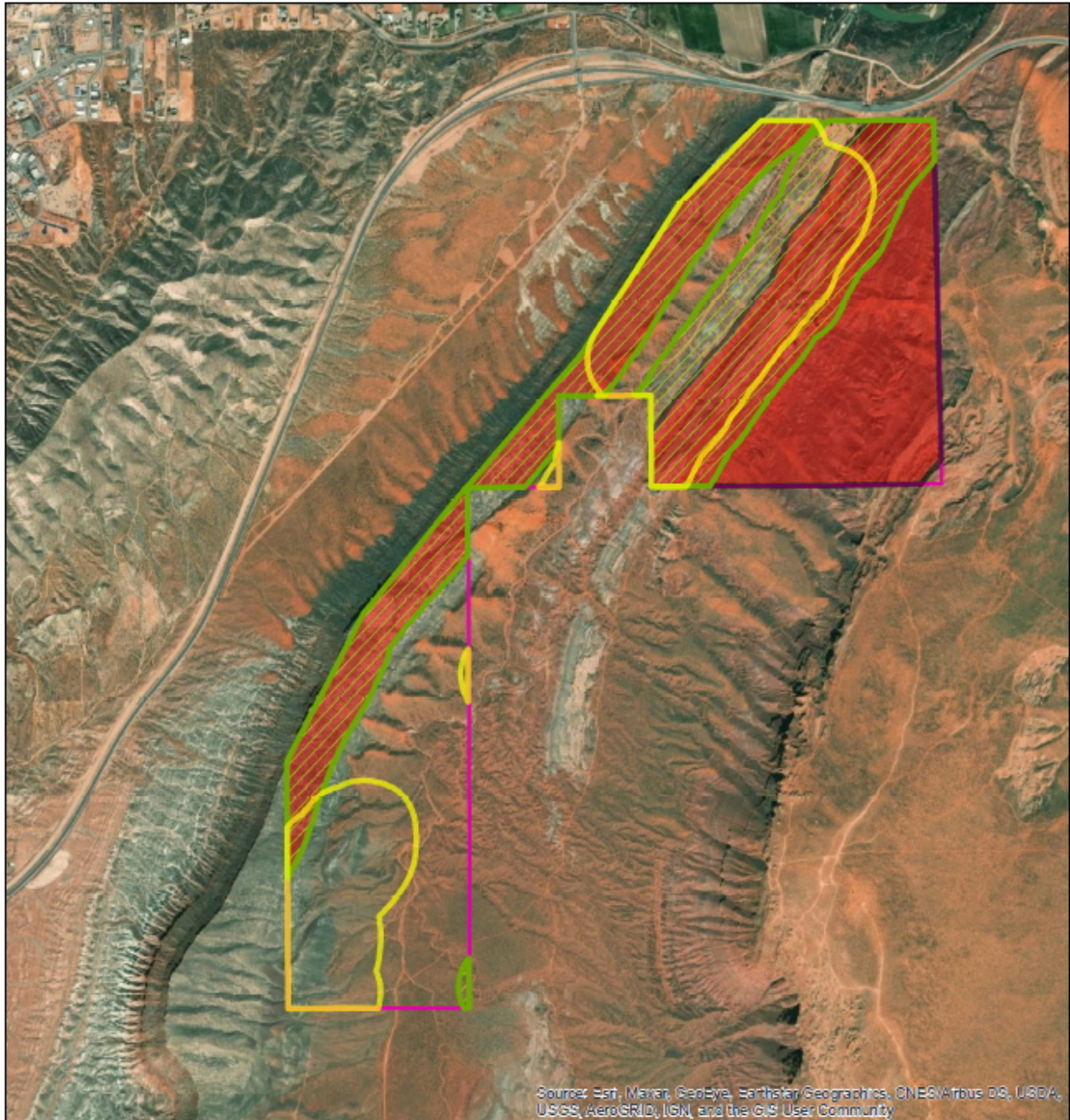


February 18th 2021

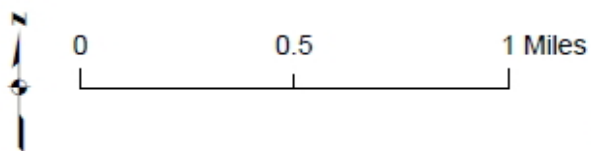
Figure 2. BLM lands requiring rare plant surveys.





Warner Valley Exchange

UNITED STATES DEPARTMENT OF THE INTERIOR
BUREAU OF LAND MANAGEMENT
ST. GEORGE FIELD OFFICE



Source: Esri, Maxar, GeoEye, Earthstar Geographics, CNES/Airbus DS, USDA, USGS, AeroGRID, IGN, and the GIS User Community



-  Shivwits_potential
-  Siler_pincushion_potential
-  Poppy_potential
-  WCWCD_Parcel_Interest