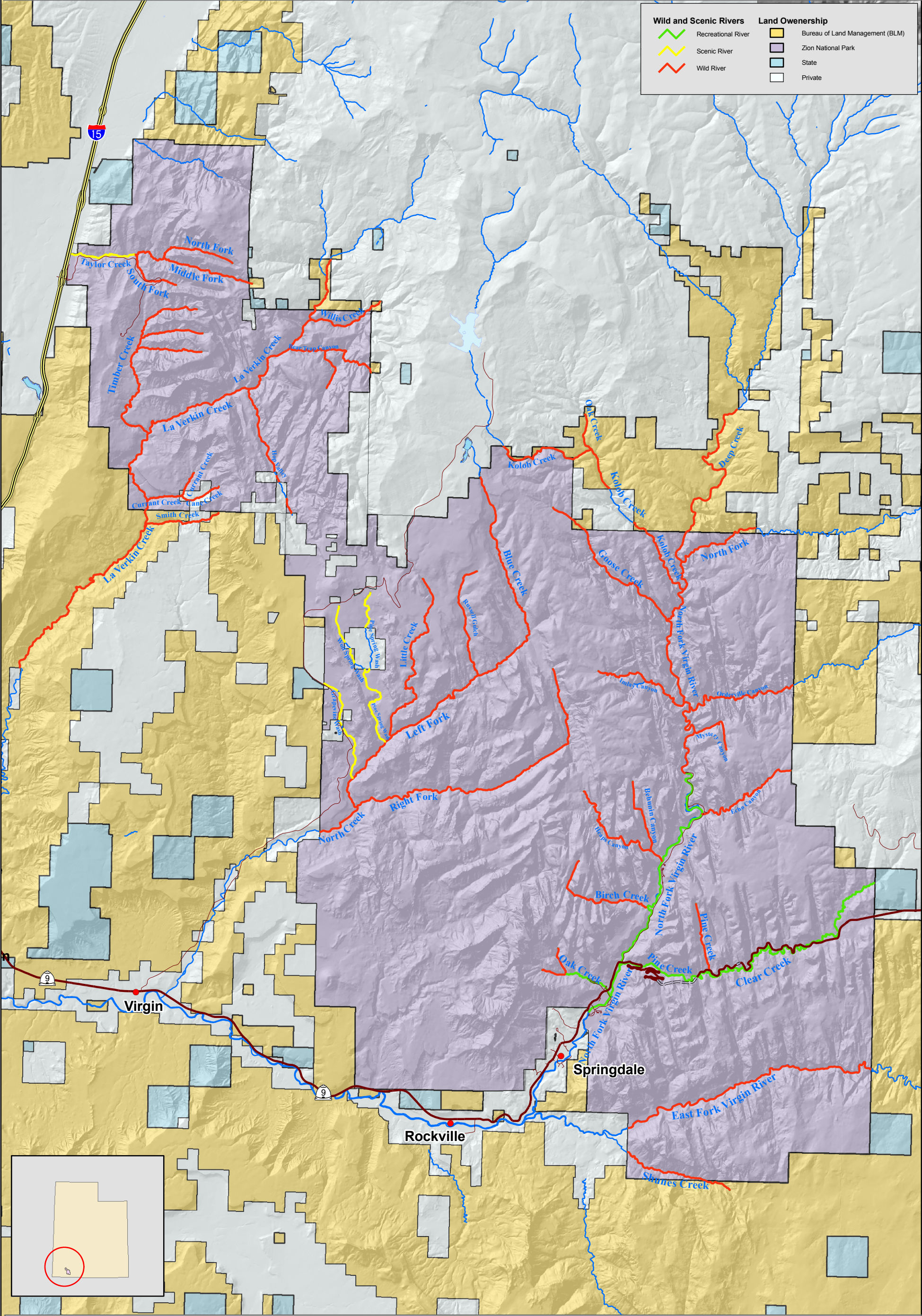


Wild and Scenic River Segments
Zion National Park and Bureau of Land Management

April 2008

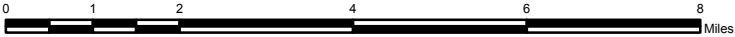


Data sources provided by Zion National Park, Resource Management & Research Division, GIS Program Office.

The National Park Service does not assume responsibility for information accuracy, precision, or completeness of data as displayed on this map.



1:140,000



DATA SOURCES:
USGS Hydrology,
BLM Land Ownership,
NPS Boundary and Roads